

BILL OF MATERIALS

MARK	QTY.	MATERIALS	LENGTH	PHASE	REMARKS	MATERIAL
325B1	1	BEAM		3		
325B1	1	W24X55	42'-3 3/16			A992
k325	4	L4X4X5/16	1'-5 1/2			A36
325B2	1	BEAM	C= 1 1/2	3		
325B2	1	W18X40	C= 1 1/2 42'-2 1/2			A992
n325	2	L4X4X5/16	1'-2 1/2			A36
p325	2	L4X4X5/16	1'-2 1/2			A36
325B3	1	BEAM	C= 1"	3		
325B3	1	W18X40	C= 1" 42'-2 1/2			A992
n325	2	L4X4X5/16	1'-2 1/2			A36
p325	2	L4X4X5/16	1'-2 1/2			A36
325B4	1	BEAM	C= 1 1/2	3		
325B4	1	W18X40	C= 1 1/2 42'-2 1/2			A992
p325	4	L4X4X5/16	1'-2 1/2			A36

SURFACE PREP: SSPC-SP2 / SP3
FINISH: NO PAINT

SHOP NOTES

13/16 U.N.
E70XX

WELDER

WELDER

WELDER

WELDER

WELDER

WELDER

WELDER

WELDER

WELDER

WELDER

WELDER

WELDER

WELDER

WELDER

WELDER

WELDER

WELDER

WELDER

WELDER

WELDER

WELDER

WELDER

WELDER

WELDER

WELDER

WELDER

WELDER

WELDER

WELDER

WELDER

WELDER

WELDER

WELDER

WELDER

WELDER

WELDER

WELDER

WELDER

WELDER

WELDER

WELDER

WELDER

WELDER

WELDER

WELDER

WELDER

WELDER

WELDER

WELDER

WELDER

WELDER

WELDER

WELDER

WELDER

WELDER

WELDER

WELDER

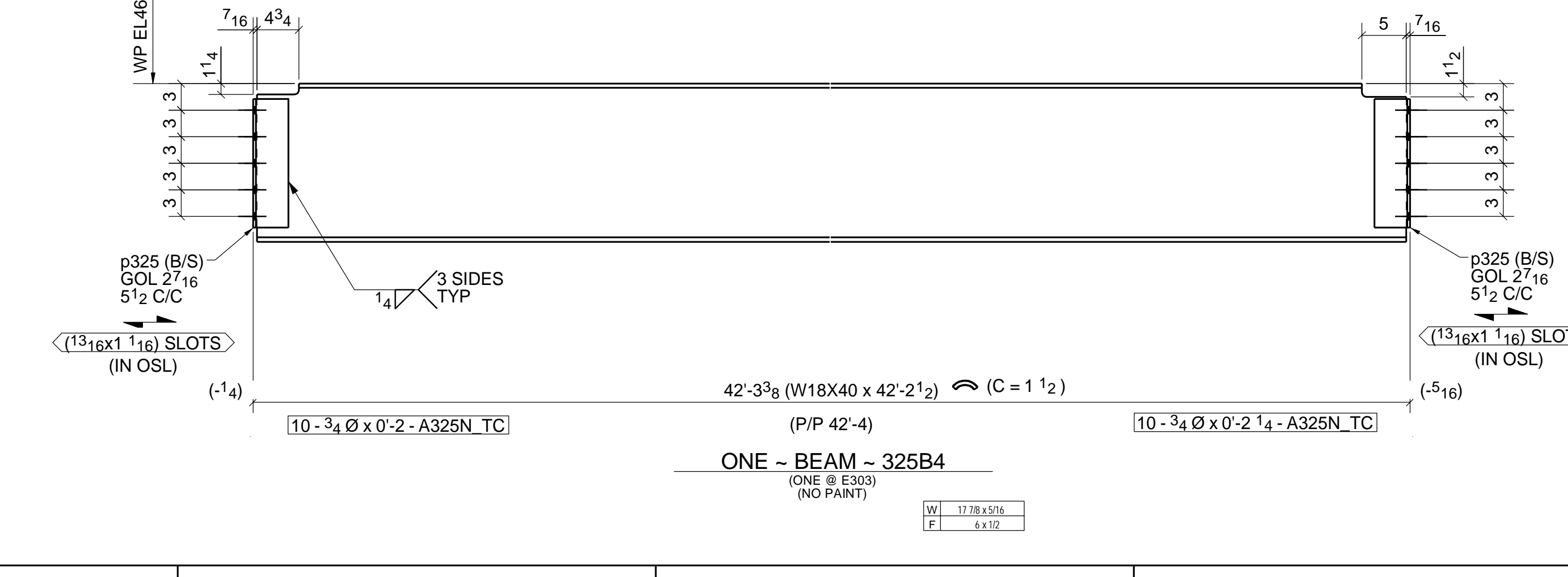
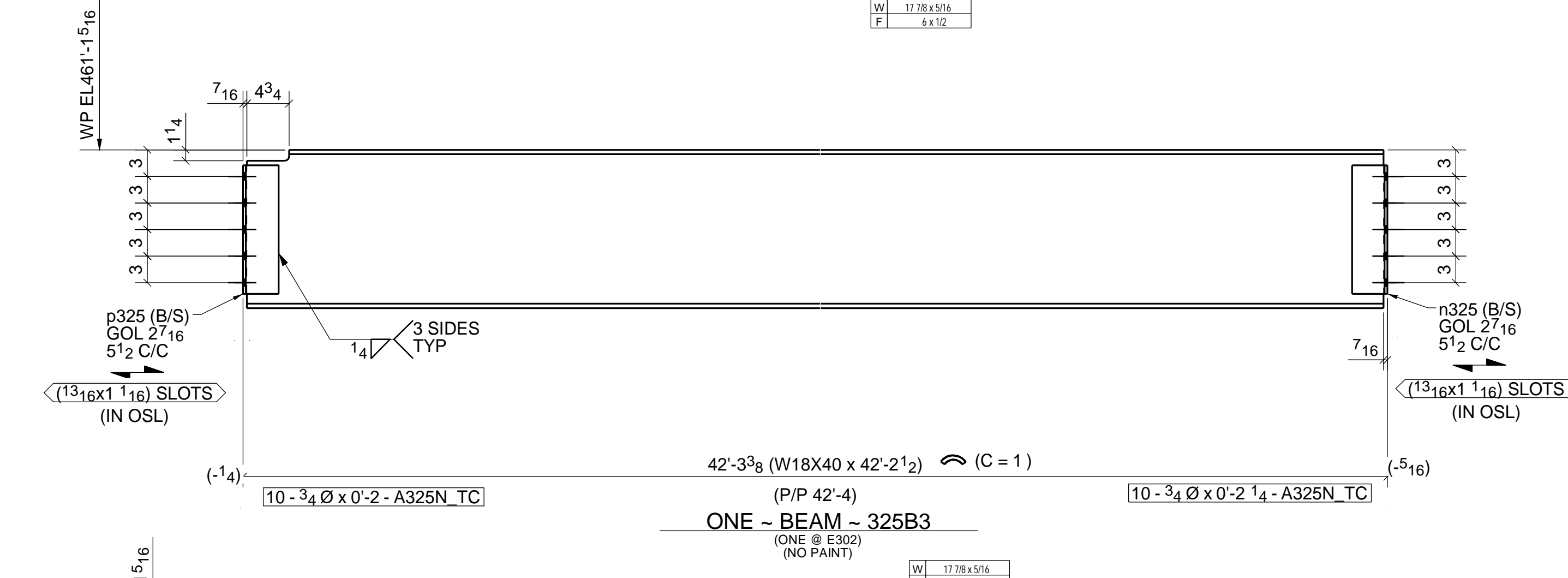
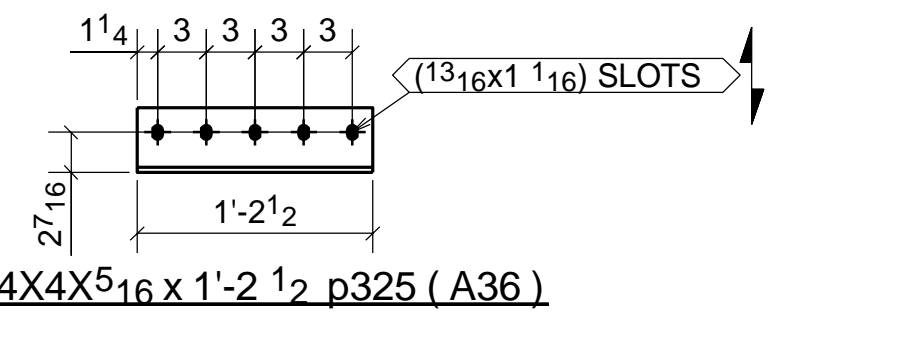
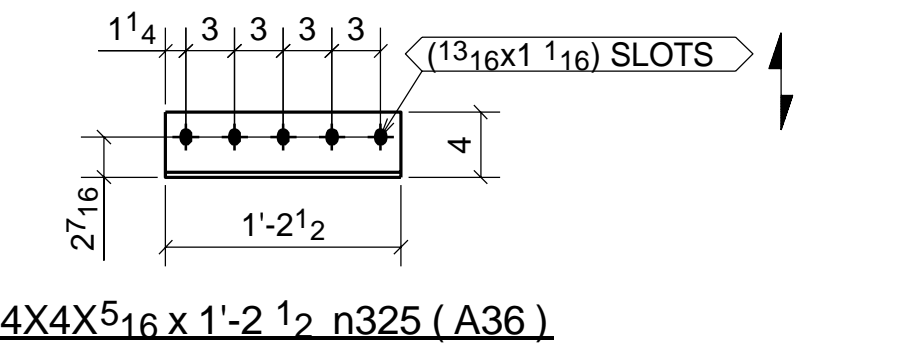
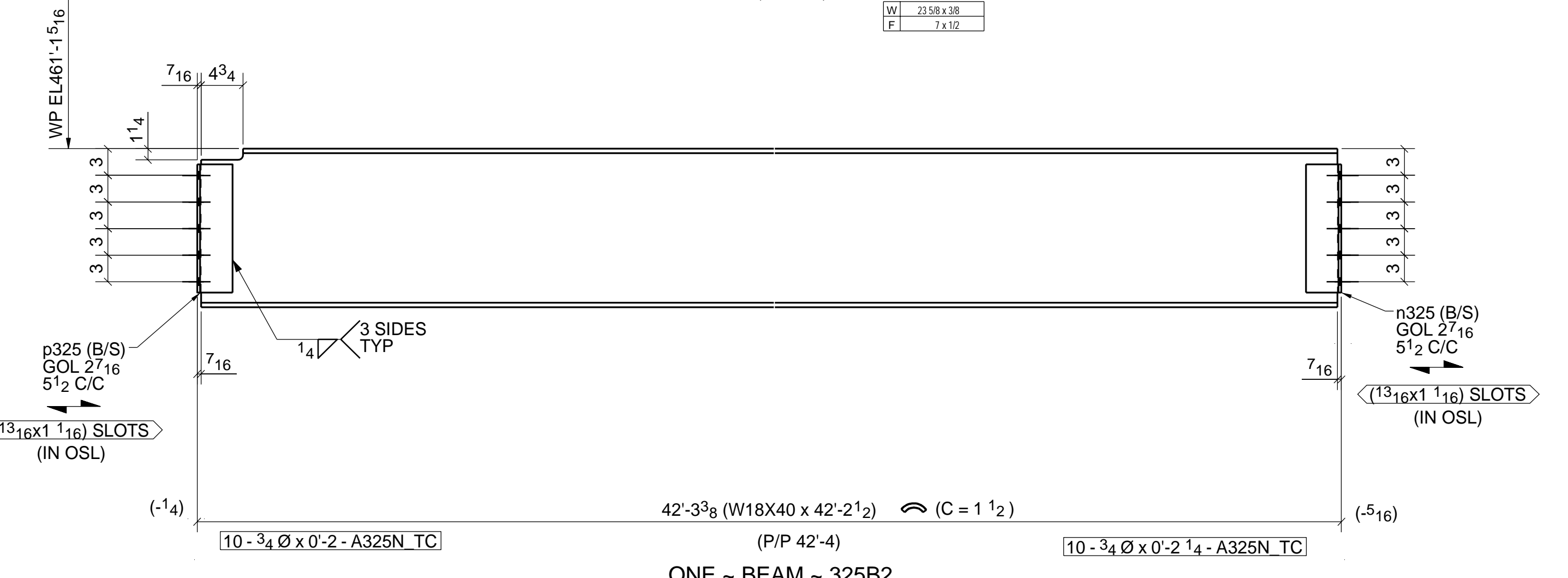
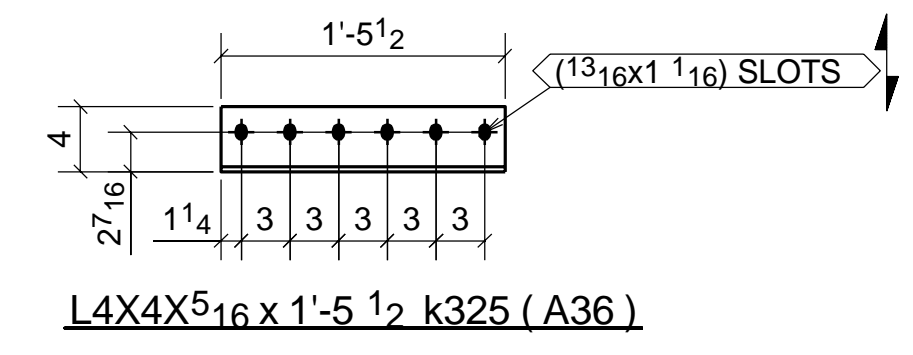
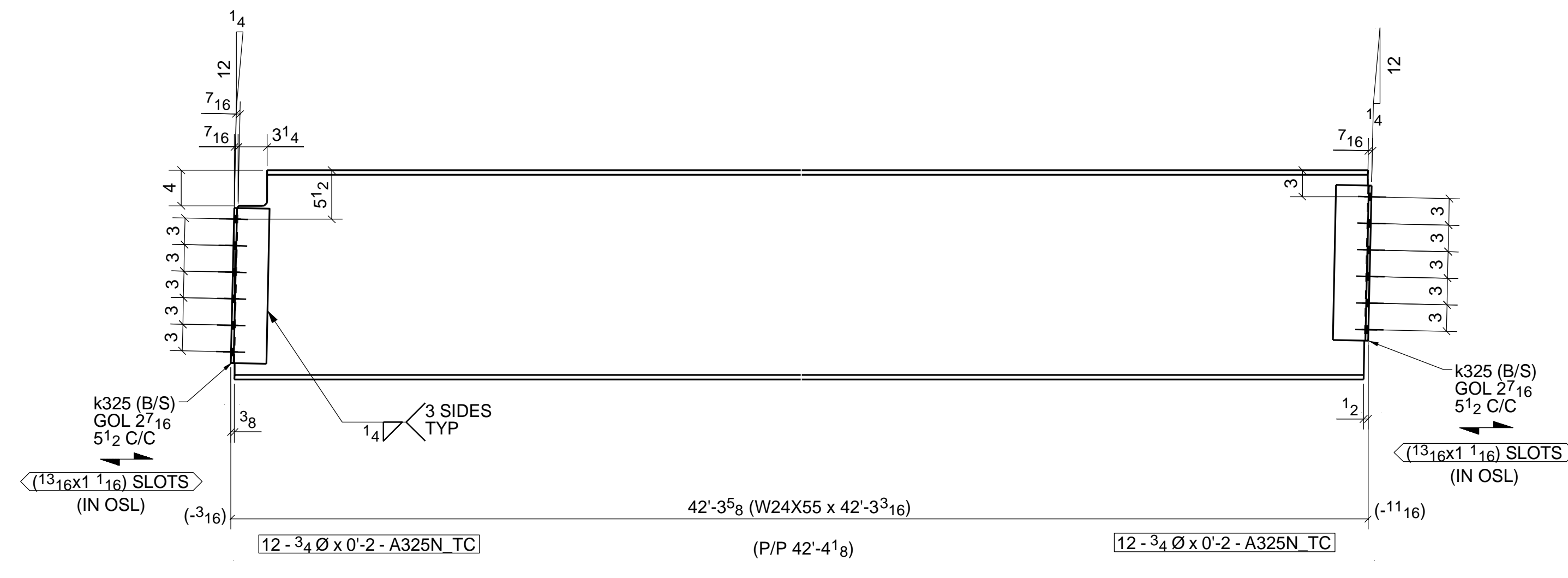
WELDER

WELDER

WELDER

WELDER

WELDER



FOR CONSTRUCTION

CONSTRUCTION ISSUE				APPROVAL ISSUE			
REV. NO.	DESCRIPTION	MADE	DATE	REV. NO.	DESCRIPTION	MADE	DATE
0	For Construction	LAK	10/13/17	A	For Approval	AMJ	08/18/17

DRAWN BY AMU 08/18/17

CHECKED BY DEE 08/18/17

REVISOR BY DATE

CUSTOMER WEEDY

PROJECT LAUDER

JOB# 11085

SHEET# 325

REV.# 0

NOTE: UNLESS OTHERWISE SPECIFIED, ALL WELDING TO BE PERFORMED IN ACCORDANCE WITH AWS D1.1 WITH E70XX LH FILLER METAL

NOTE * IMPORTANT * NOTE
We will not accept charges for labor, materials, or corrective work unless duly authorized.